

# BUFFET & CATERING

Hot Serving Solutions & Display



## INDUCTION OPTIONS







Above shown with: Hot Food Templates, (pages 38-39), Angled Risers (page 41) and Ergonomic Locking Tongs (page 242).

## TRI-PLY COOKWARE

- What does tri-ply mean?
  - 18/8 Stainless Steel interior
  - Aluminum core
  - 18/0 Stainless Steel exterior
- Stainless Steel and aluminum construction ensures even heat distribution



a



b



c



d

Grill Pan and Wok both feature "helper handles" for better, more comfortable cooking control

Item #	Description	Capacity	Min Order
<b>TRI-PLY COOKWARE-STAINLESS STEEL, ALUMINUM</b>			
a. CW7010	Braiser w/ Handles, 10" dia x 2½"	3 qt	1 ea
b. CW7012	Wok w/ 2 Handles, 9½" dia x 3"	3 qt	1 ea
c. CW7020	Grill Pan w/ Helper Handle, 11" dia x 1¾"	3 qt	1 ea
d. CW7014	Wok w/ Helper Handle, 11¾" dia x 3¾"	5 qt	1 ea

# TRI-PLY COOKWARE



Item #	Description	Capacity	Min Order
<b>TRI-PLY COOKWARE-STAINLESS STEEL, ALUMINUM</b>			
CW2042	Oval Pan w/ 2 Handles, 12¼ x 9½ x 3"	4 qt	1 ea
a. CW2044	Oval Pan w/ 2 Handles, 16¾ x 10⅞ x 2½"	5½ qt	1 ea
b. CW2030	Roast Pan w/ 2 Handles, 11½ x 9½ x 2½"	3½ qt	1 ea
CW2032	Roast Pan w/ 2 Handles, 14½ x 11¾ x 2½" (Not Induction Ready)	6 qt	1 ea
CW2034	French Oven 2 Handles, 16¾ x 13¾ x 4¾" (Not Induction Ready)	11 qt	1 ea
c. CW2034L	French Oven Lid, Fits CW2034, 17½" dia		1 ea
<b>SAUCE POTS</b>			
d. CW7000	Sauce Pot w/ 2 Handles, 6¼" dia x 2½"	1 qt	1 ea
CW7002	Sauce Pot w/ 2 Handles, 6¾" dia x 3⅞"	2 qt	1 ea
CW7004	Sauce Pot w/ 2 Handles, 7⅞" dia x 4½"	3 qt	1 ea
CW7006	Sauce Pot w/ 2 Handles, 8⅞" dia x 4⅞"	4 qt	1 ea
<b>18/8 STAINLESS STEEL LIDS</b>			
e. CW7000L	Lid for CW7000, 6¼" dia		1 ea
CW7002L	Lid for CW7002, 6¾" dia		1 ea
CW7004L	Lid for CW7004, 7⅞" dia		1 ea
CW7006L	Lid for CW7006, 8⅞" dia		1 ea
CW7008L	Lid for CW7010 & CW7012, 9½" dia		1 ea
CW7014L	Lid for CW7014, 12½" dia		1 ea

PROFESSIONAL  
BAKEWARE  
BY  
FABER-CASTELL



Sauce Pots (CW7000-CW7006)  
Lids sold separately



Lid sold separately  
(CW2052L)



Additional mini servers  
available, see page 176



## TRI-PLY TABLETOP MINI SERVERS

- Bring style to your buffet or table service with these high quality and versatile mini servers
- From oven to table; cook and serve in the same dish
- 18/8 Stainless Steel interior, aluminum core, 18/0 Stainless Steel exterior
- Ships from Willis, TX and Gurnee, IL



Item #	Description	Capacity	Min Order
<b>MINI CASSEROLES—STAINLESS STEEL, ALUMINUM</b>			
a.	CW2052 Casserole, 5½" dia x 2¼"	16 oz	1 ea
b.	CW2054 Casserole, 6" dia x 1½"	16 oz	1 ea
c.	CW2056 Oval Casserole, 6½ x 5 x 2"	24 oz	1 ea
d.	CW2040 Oval Casserole, 9 x 7 x 2"	1¼ qt	1 ea
<b>MINI SAUCE PAN, STAINLESS STEEL, ALUMINUM</b>			
	CW7000 Sauce Pan, 6¼ dia x 2½" (not on price list)	1 qt	1 ea
REPLACEMENT PARTS & ACCESSORIES			
	CW2052L Lid for CW2052, 5½" dia	–	1 ea
	CW7000L Lid for CW7000, 6¼" dia (not on price list)	–	1 ea



## MINI SERVERS

- Perfect for upscale table display and side serving
- What does two-ply mean?
  - 18/8 Stainless Steel interior
  - 18/0 Stainless Steel single clad base plate



Item #	Description	Capacity	Min Order
<b>MINI SERVERS—STAINLESS STEEL</b>			
	CW2050 Sauce pan w/ handle, 2¾" dia (Not Induction Ready)	5 oz	1 ea
e.	CW2072 Round, 4¼" dia x 2¼"	14 oz	1 ea
	CW2074 Round, 5¼" dia x 2½"	24 oz	1 ea



# cast iron works



## CAST IRON COOKWARE & SERVERS

Cast Iron is a mainstay in the service industry, providing a "home-cooked meal" feeling to your serving presentation.

- Simple solution for cooking and serving in one dish
- Pre-seasoned with FDA grade soybean oil, naturally non-stick and easy to clean
- Durable and dependable, traditional cast iron construction
- Oval Sizzle Platter (10746) pairs with our Acacia Oval Underliner (10764) \*Not Included\*
- Hand Wash only



Item #	Description	Capacity	Min Order
<b>ROUND CASSEROLES</b>			
a. CW30110	4" dia x 1 1/4" (3/4" Handles, Height w/ Lid 3 3/8")	8 oz	1 ea
CW30148	5 1/2" dia x 2 1/2" (3/4" Handles, Height w/ Lid 3 3/4")	18 oz	1 ea
<b>OVAL CASSEROLES</b>			
CW30112	5 x 3 3/4 x 1 1/4" (1/2" Handles, Height w/ Lid 3 1/8")	8 oz	1 ea
<b>OVAL AU GRATIN</b>			
b. CW30100	8 1/2 x 6 x 1 1/4" (1" Handles)	24 oz	1 ea
<b>KETTLE</b>			
c. CW30151	Round, 5" dia x 3"	16 oz	1 ea
<b>ROUND SERVERS</b>			
d. CW30102	4 3/4" dia x 1 1/4" (3/4" Handles)	8 oz	1 ea
e. CW30104	5 1/2" dia x 1" (Length w/Handles 7 3/4")	12 oz	1 ea
f. CW30142	6 1/4" dia x 1 1/2" (1" Handles)	18 oz	1 ea
CW30140	7 1/4" dia x 1 3/4" (1" Handles)	28 oz	1 ea
<b>SQUARE SERVERS</b>			
g. CW30150	5 x 5 x 1 1/4" (1" Handles)	12 oz	1 ea
<b>ROUND SKILLETS</b>			
h. CW30122	3 3/8" dia x 1" (3 1/2" Handle)	3 oz	1 ea
i. CW30124	6 1/8" dia x 1 1/4" (3 1/2" Handle)	8 oz	1 ea
j. CW30108	5 1/2" dia x 1 3/8" (3 1/2" Handle)	12 oz	1 ea

## CASH & CARRY

All of our cast iron items are conveniently and consistently packaged



Scan code or go to our YouTube channel to watch our transformative cast iron video



Includes a heat-safe mitt for easy and safe transportation to the table



Item #	Description	Capacity	Min Order
<b>PLATTER, WOK, AND PANS</b>			
k.	CW30152 Platter, 8" dia x 1.25" (1 1/8" Handles)	24 oz	1 ea
l.	CW30114 Pan, 10 1/4 x 10 1/4 x 2" (1 1/4" Handles)	2 1/4 qt	1 ea
m.	CW30116 Wok, 14" dia x 4 1/2" (1 1/2" Handles)	6 qt	1 ea
n.	CW30118 12" Pizza Pan, 13 1/2" dia w/ 2" Handles	—	1 ea
<b>SIZZLE PLATTER</b>			
o.	10746 Oval, 9 1/4 x 6 5/8 x 7/8"	—	1 ea
p.	FSR3 Platter Set: Sizzle Platter: 11 3/4 x 7 1/4 x 3/4", 5" Handle Wood Underliner: 11 3/4 x 8 3/4 x 1/2"	—	1 ea
<b>COCOTTES W/ LIDS--STAINLESS STEEL KNOB</b>			
q.	10747 4" dia x 2" (1/2" Handles)	8 oz	1 ea
r.	10748 5 1/8" dia x 2" (1/2" Handles)	16 oz	1 ea
<b>LOAF PAN</b>			
s.	10749 Rectangular, 10 x 5 1/4 x 2 1/8" (1" Handles)	64 oz	1 ea
<b>CAST IRON UNDERLINERS--ACACIA WOOD</b> (Not available as Cash & Carry)			
t.	UCW01 Fits CW30102/CW30150, 5" Square Cut-Out	—	1 ea
u.	10764 Acacia Wood Underliner for Cast Iron Oval Skillet (10746)	—	1 ea
<b>CAST IRON UNDERLINERS--ACACIA WOOD &amp; SILICONE</b>			
v.	UCW10 10 x 7" Silicone Liner, 4 1/4" Handle, 8 3/4 x 6 1/2" Cut-Out	—	1 ea
<b>REPLACEMENT PARTS &amp; ACCESSORIES</b> (Not available as Cash & Carry)			
	CW30110L Lid for CW30110	—	1 ea
	CW30112L Lid for CW30112	—	1 ea
	UCW10L Liner for UCW10	—	1 ea



Underliners are heat safe up to 450°F



t

Acacia underliners are heat safe for transporting vessels and for protecting tables and countertops from hot cast iron



v

Silicone underliner is heat safe to 400°F



## DIE CAST COOKWARE

- For use on stove top hot plate; induction ready and oven-safe
- Exterior coating is designed for exposure to high temperatures
- Features a non-stick interior and strong cast handles
- These products ship from Willis, TX and Gurnee, IL



**FAQ:**  
What is Die Cast?

Our Die Cast cookware is constructed from aluminum with non-stick coating. Magnetic steel plugs on the bottoms of the vessels make them induction ready.



## NON-STICK GRILL PANS WITH GRILL MARKS

- Non-stick coating for easy cooking and cleaning
- Grill pans are ideal for presenting cooked foods on the serving line
- Integrated channels raise food from moisture, helps keep fried foods from getting soggy during service
- DuraCoat Coatings™ cannot be used on grill pans intended for cooking

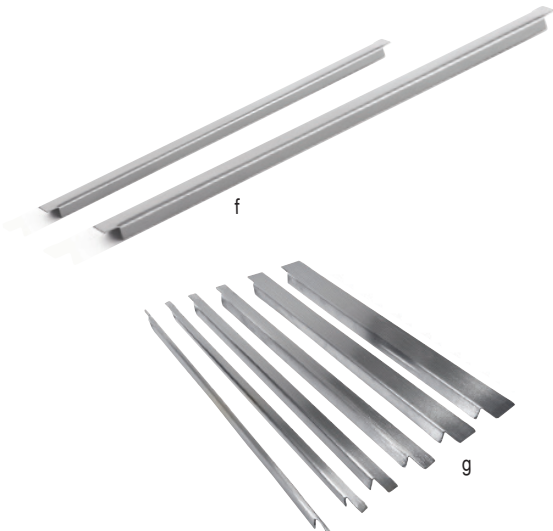
### RECTANGULAR GRILL PAN WITH GRILL MARKS—CAST ALUMINUM, NATURAL OR COATED (LOW HEAT PRESENTATION)

Item #	Description	Capacity	Min Order
e.	CW1240_ Full, 21 x 12 $\frac{5}{8}$ x 1 $\frac{1}{2}$ "	4 $\frac{1}{4}$ qt	1 ea
	CW1242_ Half, 12 $\frac{5}{8}$ x 10 $\frac{1}{2}$ x 1 $\frac{1}{2}$ "	1 $\frac{1}{2}$ qt	1 ea
	CW1244_ Half Long, 21 x 6 $\frac{3}{8}$ x 1 $\frac{1}{2}$ "	1 $\frac{3}{4}$ qt	1 ea



## UNIVERSAL ADAPTER BARS & SPACER BAR KIT

- For use in tandem with bowls that would be used in cold well applications to fill any gaps for more efficient temperature control; see page 20 for additional info.
- Bars offer options for dividing your steam table to fit all pans



Item #	Description	Min Order
<b>ADAPTER BARS—STAINLESS STEEL, MIRROR FINISH</b>		
f.	CWA12 12" Bar	1 ea
	CWA20 20" Bar	1 ea
<b>SPACER BAR KIT—STAINLESS STEEL, BRUSHED FINISH</b>		
g.	CWSBKIT 6-Piece Spacer Bar Kit, Includes (1) of Each: 0.25", 0.5", 0.75", 1", 1.25" and 2"	1 ea



# QUICK VIEW

## INDUCTION-READY CHAFERS & SERVERS



Portable Induction Cooktop sold separately (see page 53)

**All Chafers include a Food Pan**

Chafers:	Food Pan:
CW0175, CW40161, CW40163, CW40164, CW40167	CW40140
CW40176, CW40162	CW40141
CW40164, CW40165, CW40168, CW40177	CW40142
CW40178, CW40182	CW40182FP

Additional food pan options (sold separately) are shown on page 52

Item	Description	Capacity	Min Order
<b>QUICK VIEW INDUCTION CHAFERS— STAINLESS STEEL, POLISHED FINISH, GLASS WINDOWS</b>			
a. CW40182	Soup Server, 16¼ x 19¼ x 13" (Fits CW40178STAND)	11 qt	1 ea
b. CW40161	Full Size Server, 22½ x 17¼ x 8¼" (Fits CW40175STAND)	7 qt	1 ea
c. CW40163	¾ Size Server, 15½ x 16¾ x 8¼" (Fits CW40176STAND)	5 qt	1 ea
d. CW40165	Round Server, 17¼ x 19¼ x 7¼" (Fits CW40177STAND)	4 qt	1 ea



**UNIQUE CHAFER FEATURES INCLUDE:**



Slow closing lid with improved hinge design



Improved hinge design has an integrated stop to keep lid open for serving



Hinge is easier to replace (no tools needed)



New Steam Pan Lifter protects operator from steam burns, making food rotation easier



Intuitive integrated lip to assist in manually removing steam pans



Smaller window with rubber gasket holds temperature better, longer



Improved induction base integrated into design



Integrated spoon rest for seamless serving, keeping your buffet more sanitary





# TURN YOUR SERVING SPACE INTO AN *action station*

TableCraft's Action Stations create the perfect made-to-order destination. Ideal for omelet or crepe stations. Get creative and use it as a taco, pasta bar or stir-fry station. Each unit features a drop-in electric induction cooktop: (1) for each single station and (2) cooktops for a double station. Each single and double station also includes (2) half long cooling plates.

## COUNTERTOP KIT INCLUDES:

- Induction Countertop Station (CW40199\*)
- Drop-In Electric Induction Cooktop (CW40196)
- (2) Half Long Cooling Plates (CW60103)
- Bowls not included

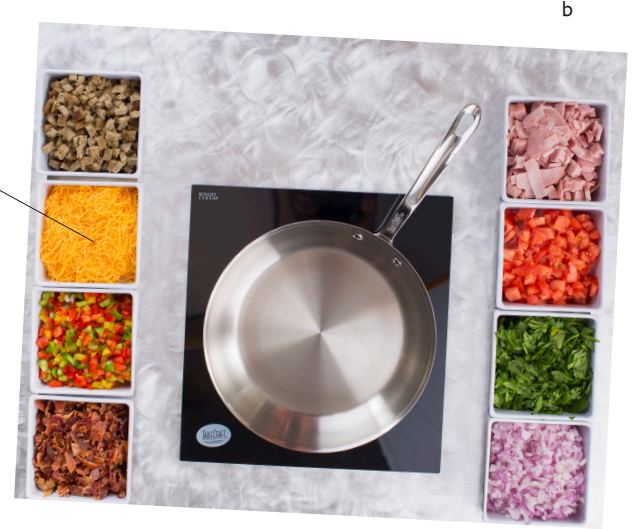
ADD DURACOAT™ COATED CAST ALUMINUM BOWLS  
Keeps Ingredients Colder, Longer



DROP-IN INDUCTION COOKTOP

CONTROL PANEL  
Safely & Easily  
Control Temperatures

COOLING PLATES  
Keeps Ingredients  
Colder, Longer



## SINGLE INDUCTION COUNTERTOP KIT



Item #	Description	Min Order/ Case Pack
<b>ACTION STATION SINGLE COUNTERTOP KIT-ALUMINUM FINISH OR COATING</b>		
a. CWACTION1BRA_	Brushed Kit, 31 $\frac{3}{8}$ x 25 $\frac{1}{4}$ x 6"	1 ea
b. CWACTION1RSA_	Random Swirl Kit, 31 $\frac{3}{8}$ x 25 $\frac{1}{4}$ x 6"	1 ea

## COUNTERTOP STATION INCLUDES:

- Induction Countertop Station (CW40199\*)
- Drop-In Electric Induction Cooktop (CW40196)
- Chafer not included

CHAFER  
Not included



DROP-IN INDUCTION COOKTOP

CONTROL PANEL  
Safely & Easily  
Control Temperatures

## SINGLE INDUCTION COUNTERTOP STATION



Stylish and perfectly proportioned for smaller spaces. Can be used with an induction chafers or as a cooktop. Fully portable for indoor and outdoor events.

Item	Description	Min Order/ Case Pack
<b>ACTION STATION SINGLE COUNTERTOP STATION-ALUMINUM FINISHES ONLY</b>		
CW40201_	Includes Induction Countertop Station (CW40198) and Drop-In Electric Induction Cooktop (CW40196), 25 x 22 x 5" with 2 $\frac{3}{4}$ " Bracket	1 ea

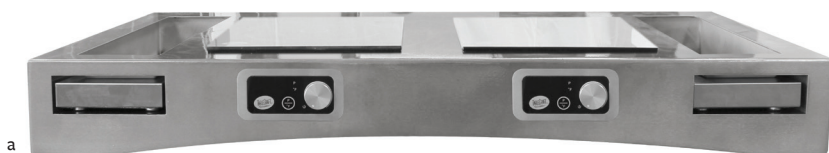


PROFESSIONAL  
BAKEWARE  
BY 

**ACTION STATION**  
FEATURES & BENEFITS



- Size and shape is designed to fit on portable catering tables at only 25¼" front-to-back
- Cooling plates (included) and cast aluminum bowls (sold separately) must be stored in freezer prior to use in order to ensure longest proper holding temperature
- Induction cooktops only work with induction-ready cookware
- Induction cooktop electrical specifications: 1800 Watts / 120 Volts / 15 Amps
- Custom sizes and shapes available, contact your TableCraft rep for details



- DUAL STATION KIT INCLUDES:
- Induction Countertop Station (CW40200\*)
  - (2) Drop-In Electric Induction Cooktops (CW4019)
  - (2) Half Long Cooling Plates (CW60103)
  - Bowls not included, see configuration options below

**ACTION STATIONS**  
DUAL INDUCTION  
COUNTERTOP KITS



Item #	Description	Min Order/ Case Pack
<b>ACTION STATION SINGLE COUNTERTOP KIT-ALUMINUM FINISH OR COATING</b>		
a. CWACTION2BRA_	Brushed Double Kit, 47¾ x 25¼ x 6"	1 ea
CWACTION2RSA_	Random Swirl Double Kit, 47¾ x 25¼ x 6"	1 ea

FOR SINGLE & DOUBLE:

STATION FINISHES



\*BRA Brushed      \*RSA Random Swirl

TO ORDER ACTION STATIONS

**CWACTION(1/2) BRA**  
ITEM NUMBER FINISH

STATION COATINGS



\*TCL Translucent Clear      \*TCP Translucent Copper      \*TBK Translucent Black

TO ORDER BRUSHED WITH COATING:

**CWACTION(1/2) TBK**  
ITEM NUMBER COATING

TO ORDER RANDOM SWIRL WITH COATING:

**CWACTION(1/2)RSA TBK**  
ITEM NUMBER COATING

**MODULAR STATIONS**  
INDUCTION AND COOLING




Item #	Description	Min Order/ Case Pack
<b>ACTION STATIONS, MODULAR-ALUMINUM, FINISH OR COATING</b>		
b. CWACTION7_	Induction Station, 14¼ x 25¼" x 5¾"	1 ea



**INDUCTION ACTION STATION**  
#CWACTION7BRATBK(shown)  
Overall size: 14¼ x 25¼ x 5¾"  
Includes (1 ea) CW40196 Induction Drop-In Cooktop (1800W/120V/15A)



Ships from Gurnee, IL 60031

World Headquarters: 801 Lakeside Drive, Gurnee, Illinois 60031 | p: 847.855.9000 | f: 847.855.9012 | Customer service: 800.323.8321  
info@tablecraft.com | www.tablecraft.com |  facebook.com/tablecraft