

PROFESSIONAL



BAKEWARE

BY



2020

**BUFFET BOOK**

FRESHEN UP YOUR FOOD LINE

# Stainless SERVICE

Redesigned, renewed and ready to cook and serve. Our custom tri-ply cookware pieces are the perfect solution for updating your buffet or serving presentation. Cookware is available with and without handles to suit your needs. Constructed to standard food pan sizes.



11¼ QT  
#123504

11¼ QT  
#123503

## TRI-PLY SERVEWARE



- Suitable for use on stove top, hot plate, with gas, steam and induction-ready
- Provides even heat distribution

### Benefits of tri-ply:

- 18/8 Stainless Steel interior is non-reactive to foods; will not affect taste
- Aluminum core promotes even and consistent heat distribution
- 18/0 Stainless Steel exterior is induction ready

CW1106\_  
13½ x 21½"



4½ QT  
#123505



4½ QT  
#123506



5 QT  
#123507



3 QT  
#123509



2 QT  
#123511



1¼ QT  
#123513



5 QT  
#123508



3 QT  
#123510



2 QT  
#123512



1¼ QT  
#123514

# TRI-PLY SERVEWARE TEMPLATES



- Standard size: 13½ x 21⅝" to fit well size: 11⅞ x 19⅞"
- Feature silicone gaskets around cut-outs to prevent damage to pans
- Custom templates can be ordered to fit your requirements

TO ORDER TEMPLATES:  
**CW1102** **CSS**  
ITEM NUMBER FINISH



Silicone gaskets help hold pans securely in place without risk of damage to pans' exterior finish.

**5**

Template Options

**3**

Finish Options

Standard Size:  
13½ x 21⅝"

Fits Well Size:  
11⅞ x 19⅞"

We can customize the sizes and designs.

Contact your TableCraft sales representative for more information.



CW1102\_



CW1104\_



CW1106\_



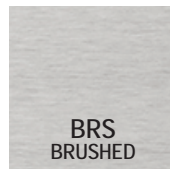
CW1108\_



CW1110\_



CW1112\_





*elevate*  
your buffet line with tri-ply

## TRI-PLY COOKWARE

Our Tri-Ply Cookware provides great performance for hot-holding and oven-to-buffet serving applications.

The quality construction of 18/8 Stainless Steel interior, aluminum core and 18/0 Stainless Steel exterior promotes even heat distribution for conventional oven and induction cooking. Ergonomically designed handles offer durability and easy handling. A variety of 18/8 Stainless Steel lids are available to accommodate many of our pans.

SAUCE POT  
WITH HANDLES 1 QT  
#CW7000



LID FOR CW7000 6¼" DIA  
#CW7000L



WOK WITH HANDLES 3 QT  
#CW7012



WOK WITH HELPER HANDLE 5 QT  
#CW7014



LID FOR CW7014 9½"  
#CW7014L





ROUND FRY PAN 1¼ QT  
#CW7016



GRILL PAN WITH HELPER HANDLE 3 QT  
#CW7020



ROAST PAN WITH HANDLES 3½ QT  
#CW2030



OVAL PAN WITH HANDLES 5½ QT  
#CW2044



FRENCH OVEN LID  
FITS CW2034, 17½" DIA  
#CW2034L





"tri" a *spot* of color

3 1/2 QT TRI-PLY ROAST PAN  
#CW2030R

Heavy-duty riveted ergonomic handles for easy lift & carry



Tri-ply construction promotes even heat distribution for induction and conventional oven cooking

## COLOR TRI-PLY COOKWARE

To add a more homestyle appearance to any buffet environment we offer a select assortment of tri-ply cookware with a touch of red or black.



2 QT TRI-PLY SAUCE POT  
#CW7002R



3 QT TRI-PLY BRASIER PAN  
#CW7010BK



## TRI-PLY TABLETOP MINI SERVERS

- Bring style to your buffet or table service with these high quality and versatile mini servers
- From oven to table; cook and serve in the same dish
- 18/8 Stainless Steel interior, aluminum core, 18/0 Stainless Steel exterior

5 OZ SAUCE PAN  
WITH HANDLE  
#CW2050



11 OZ ROUND  
MINI SERVER  
#CW2070

LID FOR CW2052  
#CW2052L



16 OZ MINI CASSOROLE  
#CW2052



16 OZ MINI CASSOROLE  
#CW2054



53 OZ MINI OVAL CASSOROLE  
#CW2040



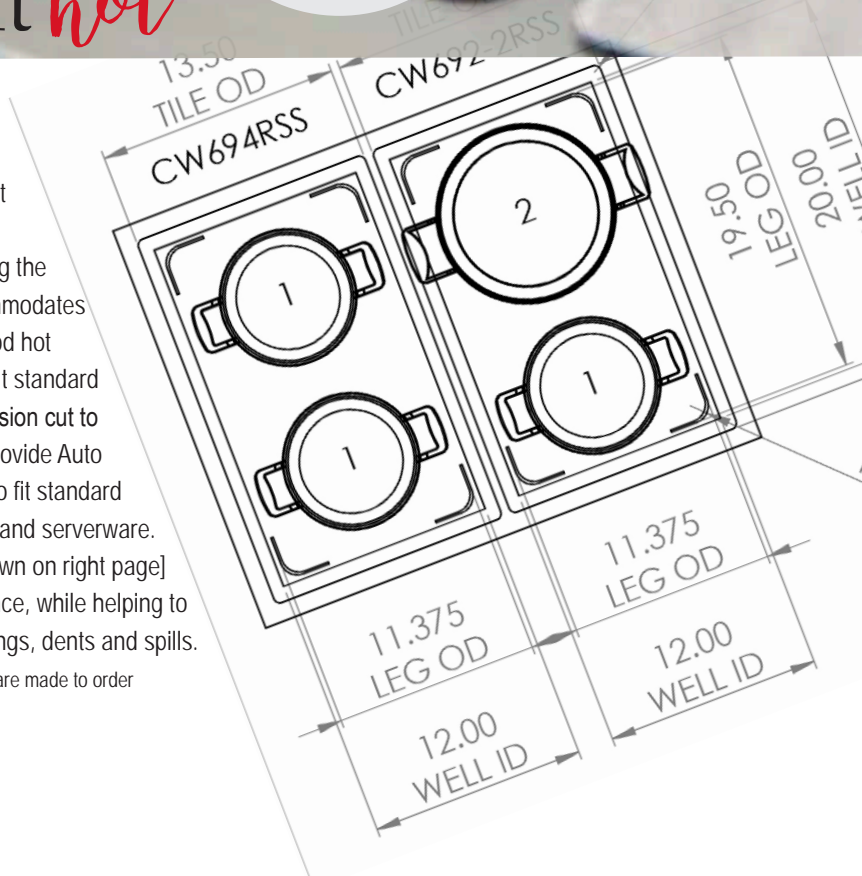
Hot Food Templates fit our Tri-Ply Cookware providing great performance for hot-holding and oven-to-buffet serving applications.

some like it *hot*

## STAINLESS STEEL HOT FOOD TEMPLATES

Enhance the appearance of your buffet with our easy-to-clean templates. Our templates help save energy by trapping the heat from rising above the pan. Accommodates temperatures up to 450° F, to keep food hot longer. Made to order\* in the USA to fit standard 12 x 20" wells, our templates are precision cut to fit our tri-ply cookware. We can also provide Auto CAD support to customize templates to fit standard size wells and your existing cookware and serverware. We also offer six surface textures [shown on right page] to help create a unique buffet experience, while helping to reduce fingerprints and camouflage dings, dents and spills.

\* Templates and tiles are not stock items. They are made to order and non-refundable.







**25**

**Template  
Options**

**6**

**Finish  
Options**

Standard Size:  
13½ x 21⅝"

Fits Well Size:  
11⅞ x 19⅞"

**CUSTOM SOLUTIONS  
AVAILABLE**

Contact us to learn more!



**BRS  
BRUSHED**



**CSS  
CIRCLE SWIRL**



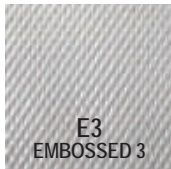
**RSS  
RANDOM SWIRL**



**E1  
EMBOSSED 1**

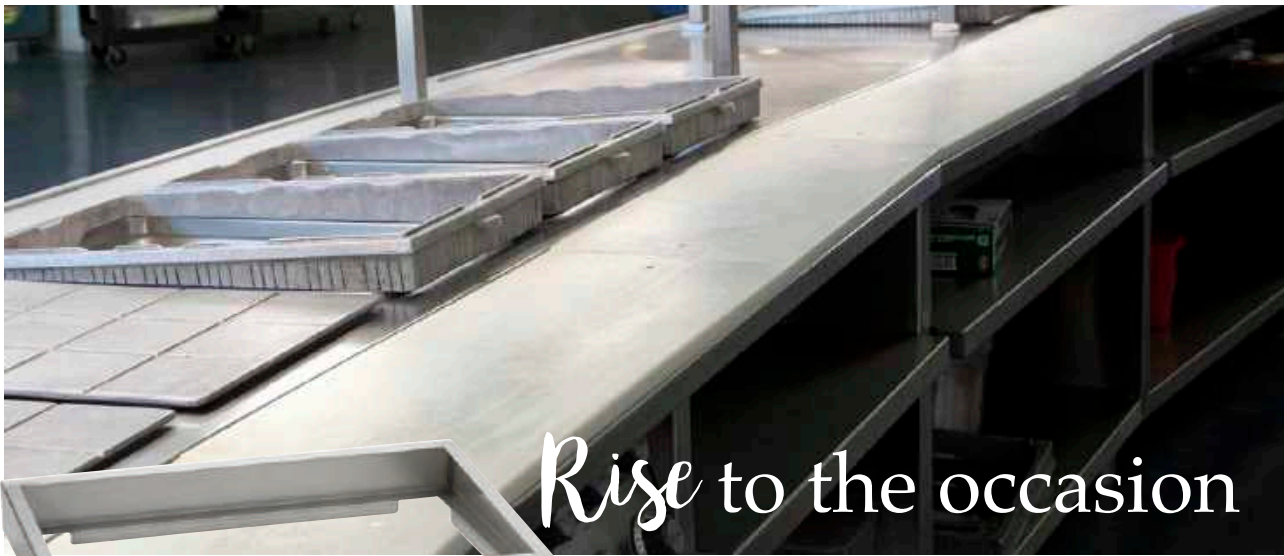


**E2  
EMBOSSED 2**



**E3  
EMBOSSED 3**

Please refer to the catalog for complete listing of templates and full ordering instructions.



# Rise to the occasion

13 X 21 X 2"  
STAINLESS STEEL RISER  
#CW900H

13¼ X 21¼ X 2¼"  
CAST ALUMINUM RISER  
#CWARDG01\_



Cast Aluminum Riser can be custom colored to fit your decor. See page 18 for color choices.

## ANGLED RISERS

Made to fit standard wells, our Stainless Steel and cast aluminum angled risers elevate the presentation of bowls and allows for easier accessibility to the serving line. The cast aluminum riser can also be color coated with DuraCoat™ for a more dynamic display.

## VERSA-TILE CARVING STATION TEMPLATES™

Show off your delicious cuts of ham, prime rib and more while serving each guest with our Versa-Tile Carving Station. These durable, heat resistant [up to 350°F] cutting boards detach easily. Select perforated boards for trapping juices within the standard steam or water pan for convenient, thorough clean-up.



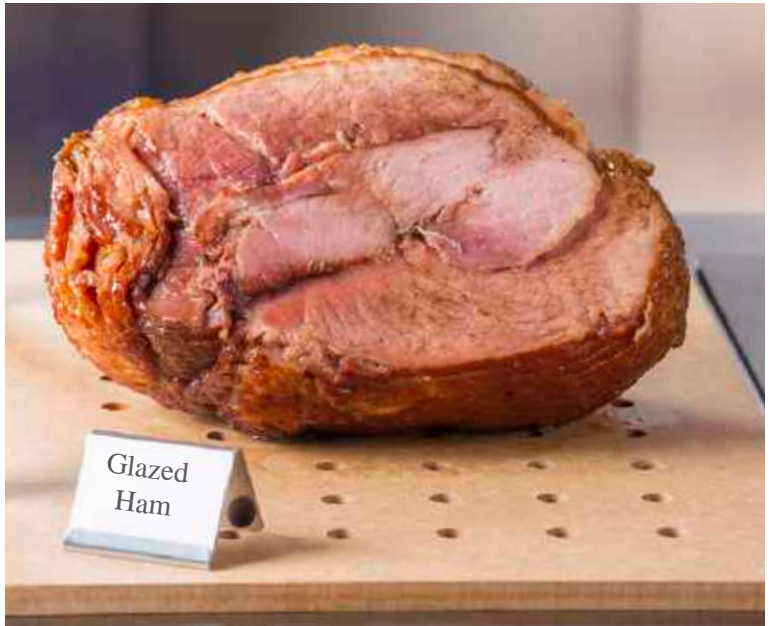
#CW6432N



#CW6430N



#CW6432BK



Custom sizes and designs available.  
Contact your TableCraft sales rep to learn more.



# Restriction-Free Serving Options

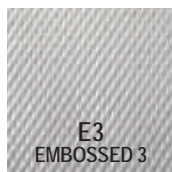
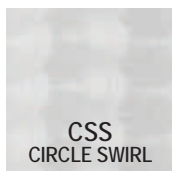
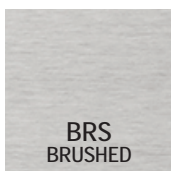
## HOT WELL COVERS

No drop-in templates means one continuous serving surface. Hot Well Covers save energy and reduce food waste by keeping foods at optimal temperatures while elevating your presentation, literally, above the wells. Available in a variety of standard sizes in both aluminum in wave or contemporary patterns and Stainless Steel finishes below.



¼" ALUMINUM CONTEMPORARY PATTERN #CW6420 [above]

¼" ALUMINUM WAVE PATTERN #CW6420WV [below]



## OUTDOOR COLLAPSIBLE SERVER FRAMES\*

Our modular 16-gauge Stainless Steel frames are a stylish and modern serving alternative. They are fully portable, perfect for indoor and outdoor use [windproof]. These frames are available in a variety of finishes.



#CW600BRS



#CW604RSS

TO ORDER SERVERS:  
**CW600** **BRS**  
ITEM NUMBER FINISH



All units require 4" water pan & fuel for operation.  
 Hot food template and serving pieces sold separately.



**ROUND SERVER w/ STAND**  
 17¼ x 19½ x 12¼"  
 #CW40177

## QUICK VIEW [FUEL] CHAFERS

Designed to allow for longer, hot-holding. The unique quick view window reducing unnecessary wear on the lid hinge and slow closing lid reduces the noise made by lifting and replacing lid. More features highlighted on page 13.



**FULL SIZE SERVER w/ STAND**  
 #CW40175  
 22¾ x 18 x 13"



**SOUP SERVER w/STAND**  
 #CW40178  
 16¼ x 19½ x 18"

## ROLL TOP [FUEL] CHAFERS

For more traditional buffet and banquet applications, our roll top chafers offer same features as our quick view counterparts. Slow closing lid for reduced noise, properly placed fuel holders for canisters to generate steam and promote even heat distribution.



**FULL SIZE SERVER**  
 #CW40167  
 25 x 17 x 17"



**ROUND SERVER**  
 #CW40168  
 13½" dia x 17¼"

## CHAFER INSERTS

Our round and full size divided inserts will add more flexibility and versatility to any service. Can be used with roll top or induction chafers listed below product descriptions.



**FULL SIZE DIVIDED FOOD PAN 2½" DEEP**  
 #CW40298  
 20¾ x 12¾ x 2½"  
 [Fits CW40167, CW40161]



**ROUND DIVIDED FOOD PAN**  
 #CW40297  
 15 x 15 x 2½"  
 [Fits CW40168, CW40177 & CW40164]

# QUICK VIEW [INDUCTION] CHAFERS

Our highly-polished Stainless Steel induction chafer with quick view window will elevate any catering or buffet line and allows the patrons to review contents prior to opening the chafer. Steam vent offers reduced condensation. The slow closing lid feature reduces the noise that often comes with removing and returning lids during service. The induction cooktop heats and holds temperature evenly without an open flame or need to replace fuel. Includes steam pan and water basin.



**SOUP SERVER**  
#CW40182  
16¼ x 19¼ x 13"  
[Fits CW40178STAND]



**ROUND SERVER**  
#CW40165  
17¼ x 19¼ x 7¾"  
[Fits CW40177STAND]



**2/3 SIZE SERVER**  
#CW40161  
22¾ x 17¼ x 8¼"  
(Fits CW40175STAND)

## Quick View Review FEATURES & BENEFITS OF OUR CHAFERS



Slow closing lid with improved hinge design



Hinge design has an integrated stop to keep lid open for serving



Hinge is easy to replace (no tools needed)



Steam Pan Lifter protects operator from steam burns, making food rotation easier



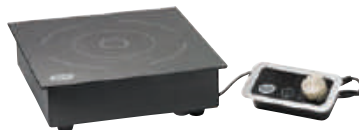
Intuitive integrated lip to assist in manually removing steam pans



Integrated spoon rest for seamless serving, keeping your buffet more sanitary



Induction base integrated into design [induction style chafers only]



**ELECTRIC 1800 WATTS  
INDUCTION DROP-IN COOKTOP**  
#CW40196

### SINGLE INDUCTION COUNTERTOP STATION

Combine an induction chafer with our induction action station for a convenient, portable serving solution for indoor and outdoor events. More action station options on pages 14-17.



**SINGLE INDUCTION STATION**  
#CW40201BRA  
Overall size: 25 x 22 x 5"  
Includes 1 ea CW40196 Induction Drop-In Cooktop [chafer sold separately]

# station to station



## ACTION STATIONS [COUNTERTOP OR KITS]

TableCraft's Action Stations are a perfect made-to-order station solution. Create a pop-up omelet station, crepe station, made-to-order pasta bar, or even add an induction-capable wok to make your own stir-fry station! Each station features a drop-in electric induction cooktop [2 cooktops on double station on right page]. The kits also include (2) half long cooling plates.

### SINGLE INDUCTION COUNTERTOP STATION

Stylish and perfectly proportioned for smaller spaces. Can be used with an induction chafer or as a cooktop. Fully portable for indoor and outdoor events.



#CW40201BRA

Shown in BRA—Brushed Chafer Not Included

### SINGLE INDUCTION COUNTERTOP KIT

Perfect option for your omelet, stir-fry or made-to-order serving station providing you the ease of portability for indoor or outdoor events.



#CWACTION1RSA\_



# DOUBLE INDUCTION COUNTERTOP KITS

Multi-tasking serving line at its best, most efficient and stylish. Having two independent induction cooktops and separate cooling sections, allows you to custom accessorize your station. Mastering two entrees at once will keep your guests happy and your line moving quickly.



FINISH & COATING  
OPTIONS AVAILABLE  
FOR SINGLE OR  
DOUBLE STATIONS:

#### STATION FINISHES



BRA  
Brushed      RSA  
Random Swirl

#### STATION COATINGS



TCL  
Translucent  
Clear      TCP  
Translucent  
Copper      TBK  
Translucent  
Black

#CWACTION2TBK

## good to know

- Size and shape is designed to fit on portable catering tables at only 25¼" front-to-back
- Cooling plates [included] and cast aluminum bowls [sold separately] must be stored in freezer prior to use in order to ensure proper holding temperature
- Induction cooktops only work with induction-ready cookware
- Induction cooktop electrical specifications are 1800 Watts / 120 Volts / 15 Amps
- Custom sizes and shapes available, contact us for details

## ACTION STATION ACCESSORIES

The cooling plates and drop-in electric induction cooktop are included with these stations.



HALF LONG SIZE COOLING PLATE  
#CW60103



ELECTRIC 1800 WATTS INDUCTION  
DROP-IN COOKTOP  
#CW40196

Bowls are sold separately to allow the operator the freedom to choose from a variety of style, shapes and capacities. Contemporary Collection™ cast aluminum bowls are coated with DURACOAT™. Choose any combination up to 8 bowls, shown below or create your own configuration from our assortment listed in our catalog.



a.



b.



c.

a. 1 QT CONDIMENT CROCK, 4¾" DIA X 5" #CW1665\_

b. 1 QT STRAIGHT-SIDE BOWL, 5 X 5 X 3" #CW4024\_

c. 1½ QT STRAIGHT-SIDE BOWL, 4¾" X 4¾" X 6" #CW4012\_

See page 18 for color choices.



Creating the system *you* need,  
*where* you need it.



**DOUBLE BUTANE ACTION STATION**

#CWACTION5\_

[also shown below]

Overall size: 14¼ x 55"

Includes 2 ea CW60103 Cooling Plates.

Note:123463 Butane Stoves sold separately

Fits a combination of the following Contemporary Collection Cast Aluminum Bowls\*:

(8 ea) #CW4024, (4 ea) #CW4026, (2 ea) #CW4004 [also sold separately]



**MODULAR  
ACTION STATIONS**

New Modular Action Stations allow you to add multiple cooking stations and cooling plates where you need them, using less space and creating maximum flexibility.



**SINGLE BUTANE ACTION STATION**

#CWACTION6\_

Overall size: 14¼ x 26"

Includes 1 ea CW60103 Cooling Plate

Note:123463 Butane Stoves sold separately

Fits a combination of the following Contemporary Collection Cast Aluminum Bowls\*:

(4 ea) #CW4024, (2 ea) #CW4026, (1 ea) #CW4004 [sold separately]



# making it modular

Creating your own customized work station is as easy as 1-2-3 or more!



## HALF SIZE COOLING STATION

#CW40214\_

Overall size: 12¼ x 14¼ x 5¾"

Includes 1 ea CW60101 Cooling Plate  
Fits a combination of the following Contemporary Collection Cast Aluminum Bowls\*: (4 ea) #CW4024, (2 ea) #CW4026, (1 ea) #CW4004 [sold separately]



## INDUCTION STATION

#CWACTION7\_

Overall size: 14¼ x 25¼ x 5¾"

Includes 1 ea CW40196 Induction Drop-In Cooktop [1800W/120V/15A]



## HALF LONG COOLING STATION

#CW40212\_

Overall size: 8½ x 25¼ x 5¾"

Includes 1 ea CW60103 Cooling Plate  
Fits a combination of the following Contemporary Collection Cast Aluminum Bowls\*: (4 ea) #CW4024, (2 ea) #CW4026 [sold separately]



## FULL SIZE COOLING STATION

#CW40210\_

Overall size: 14¼ x 25¼"

Includes 1 ea CW60100 Cooling Plate  
Fits a combination of the following Contemporary Collection Cast Aluminum Bowls\*: (8 ea) #CW4024, (2 ea) #CW4004, (4 ea) #CW4026, (1 ea) #CW4032 [sold separately]

\*Select Action Stations feature 2¼ Qt Tri-Ply 10" Fry Pan, Portable Butane Stove #123463 and/or Contemporary Collection™ Cast Aluminum Bowls and are all sold separately, see comprehensive product catalog for more information.

All Action Stations ship from Willis, TX 77378

## FOR SINGLE & DOUBLE:

### STATION FINISHES



\*BRA  
Brushed

\*RSA  
Random Swirl

TO ORDER ACTION STATIONS

**CW**ACTION(5/6) **BRA**  
ITEM NUMBER FINISH

### STATION COATINGS



\*TCL  
Translucent  
Clear

\*TCP  
Translucent  
Copper

\*TBK  
Translucent  
Black

TO ORDER RANDOM SWIRL OR BRUSHED WITH COATING:

**CW**ACTION(5/6)**BRA** **TBK**  
ITEM NUMBER COATING

# add colorful personality to your presentation!



## DURACOAT™ COATED CAST ALUMINUM COLORS



Spice up your salad bar, color-code your condiments or organize your hors d'oeuvres. We currently have 24 total color options [including natural] available to add more flair to your display. Our DuraCoat™ cast aluminum coating is NSF® listed, dishwasher safe, and are safe for cold foods only; temperatures from -20 up to 195°F.

\* DuraCoat not intended for use in steam wells.

### Neutrals



N: Natural/Pewter    BK: Black    W: White

### Trending Colors



PB: Pigeon Blue    MM: Modern Mint    SNX: Sunset Orange



X: Orange    Y: Yellow    R: Red    LG: Lime Green

### Traditional Colors



GY: Gray    HGN: Hunter Green    SBL: Sky Blue

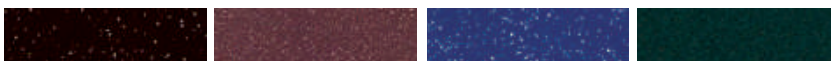


CP: Copper    BR: Brown    GN: Green    CBL: Cobalt Blue

### Granite & Speckled Patterns:



GR: Granite    MBS: Midnight w/Blue Speckle    HGNS: Hunter Green w/White Speckle



MS: Midnight Speckle    MRS: Maroon Speckle    BS: Blue Speckle    BKGS: Black w/Green Speckle

All of our cast aluminum accessories from bowls and trays to drop-ins and cold well templates can be ordered with our DuraCoat™ coatings that adhere perfectly to every shape, size and contour.



#CW1066BK



#CW4088CP



#CW4052BK



#CW4080LG



focus on food

For complete product specifications, please refer to the charts at the back of the book.

## SIMPLE SOLUTIONS™ BUFFET SYSTEM

Put the focus back on the food in your buffet display and assemble your cold well unit with ease, using TableCraft's Simple Solutions™ buffet system; featuring a full range of bowls and templates that fit any industry standard size cold well.

Our bowls' straight-sided design allow them to sit perfectly side-by-side within the perforated templates, which are cut to fit each specific unit. This seamlessly tailored fit ensures that no food falls through gaps within your display and keeps the air at optimal cold-holding temperatures.



## SIMPLE SOLUTIONS™ STRAIGHT-SIDED BOWLS

Straight-sided bowls save space and are available in a variety of sizes and colors for attractive presentation. Handcrafted Sand Cast Aluminum maintains proper serving temperatures longer while providing a virtually unbreakable solution.

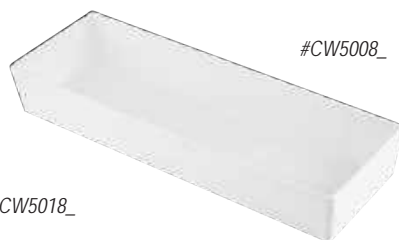


#CW5008\_

#CW5000\_



#CW5018\_





you're welcome  
to just *drop-in*...



**SIMPLE SOLUTIONS™**  
DROP-IN TEMPLATES



Template baskets are available in various sizes to create a perfect, gap-free fit without the need for adapter or spacer bars. Many standard sizes available to order in 3" and 5" depths to maximize efficiency while creating a seamless presentation. Choose brushed finish or color coated.

\* Templates and tiles are not stock items, they are made to order and non-refundable.



#CW1066BK



See page 18 for color choices.



... or *set* right down

**23**

Template Options

**24**

Color Options

**2**

Finish Options

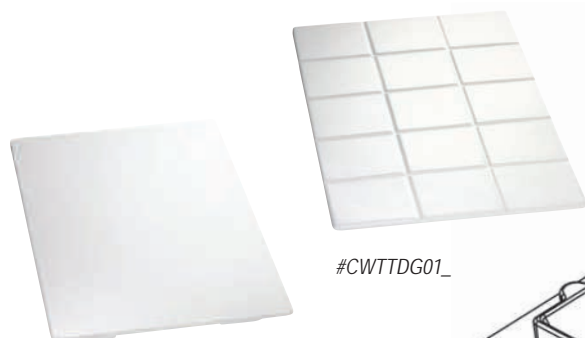
Select Solid or Grid Covers in Standard Sizes  
Templates to fit Single and Double Wells

**CUSTOM SOLUTIONS AVAILABLE**

Contact us to learn more!

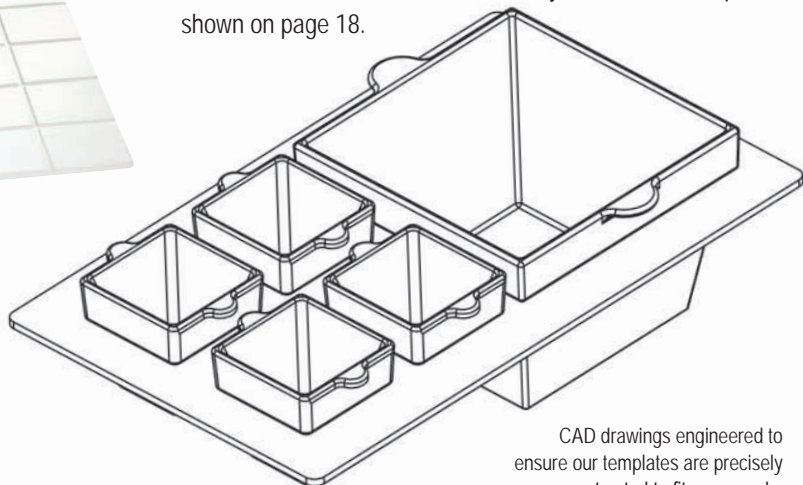
**COLD FOOD WELL  
TILES & NSF®-7 TEMPLATES**

Tiles and templates help keep foods at optimal serving temperatures while creating an energy efficient food safety zone. Tiles are available in solid or grid pattern [see left]. Ideal to cover well when not in use. These cold well accessories can be ordered in 3 different finishes or any of our 24 color options shown on page 18.

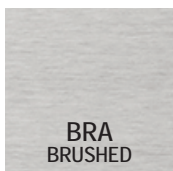


#CW970

#CWTTDG01\_



CAD drawings engineered to ensure our templates are precisely constructed to fit your needs.



**BRA  
BRUSHED**



**CSA  
CIRCLE SWIRL**

# we have quite the cast aluminum collections

Our cast aluminum bowls offers a virtually indestructible design, available in 24 colorful DuraCoat™ [plus natural]. The coating is NSF® listed, dishwasher safe, and safe for temperatures from -20 up to 195°F.



## CONTEMPORARY COLLECTION™

Save valuable space with these virtually unbreakable bowls, which sit perfectly together and pair well with our NSF®-7 templates. Chill before use to extend the proper serving temperatures for all your foods. Choose from classic white or any of our other 24 color options [see page 18].



#CW4035\_



#CW4016\_



#CW4012\_



#CW4014\_



## COUNTRY KITCHEN COLLECTION™

This collection's fluted design looks elegant in any environment and is ideal for both drop-in templates and counter-top serving.



#CW1620\_



#CW1494\_



See page 18 for color choices



#CW4058\_



## AURORA COLLECTION™

Our high performance design conducts temperature to keep food at its best. Additional Aurora items featured on page 24.



#CW4052BK



## SIERRA COLLECTION™

Our Sierra Collection's slanted design brings elegance to your display. Add a color to create an even more unique presentation.



#CW4088CP



#CW4084\_



#CW4080LG

## SERVING BOWLS

These bowls come in a variety of sizes from small 8" diameter to extra large at 18" diameter. For a complete overview of our offerings, refer to our comprehensive products catalog.



#CW3120\_



#CW3160\_

See page 18 for color choices 

# expand your serving horizons

## COOLING PLATES TRAYS AND DISPLAYS

Keep food perfectly chilled for up to 3 hours with our cooling trays. Position foods directly on brushed Stainless Steel surface or accessorize with cast aluminum trays\*. For best results, pre-chill prior to use.



#CW60101 plate with CW2112\_ tray



#CW40309B



#CW40309C



#CW60200 cooling station base only, cooling plates not included



See page 18 for color choices.

from *high* heat cooking to *low* and cold displaying options

NON-STICK COATED...



#CW1240NS

## AURORA COLLECTION™ PANS WITH GRILL MARKS

Our beautifully designed Aurora Collection™ serving platters can be custom coated for hot or cold applications. Starting with the same cast aluminum base, these pans can either be finished with a non-stick finish (CW1240NS) to withstand heat up to 450°F, which allows for more flexibility for cooking to serving. Select from our 24 color coatings or natural finish (CW1240\_) for cold to low heat holding display use [-20°F. to 195°F].

Must use universal adapter bar with this product when use in steam tables, hot or cold well, respectively (see comprehensive catalog).

...OR WITH DURACOAT™



#CW1240\_





	Item #	Description	Dimensions/ Capacity	Min Order/ Case Pack
P.2	<b>TRI-PLY SERVEWARE</b>			
	123503	Full Size, 11 x 18½ x 4"	11¼ qt	1 ea / 2 ea
	123505	Half Long Size, 5¼ x 18½ x 4"	4½ qt	1 ea / 4 ea
	123507	Half Size, 11 x 9 x 4"	5 qt	1 ea / 4 ea
	123509	Third Size, 11 x 5⅝ x 4"	3 qt	1 ea / 6 ea
	123511	Quarter Size, 5¼ x 9 x 4"	2 qt	1 ea / 6 ea
	123513	Sixth Size, 5¼ x 5⅝ x 4"	1¼ qt	1 ea / 6 ea
	<b>TRI-PLY SERVEWARE WITH HANDLES</b>			
	123504	Full Size, 11 x 18½ x 4"	11¼ qt	1 ea / 2 ea
	123506	Half Long Size, 5¼ x 18½ x 4"	4½ qt	1 ea / 4 ea
	123508	Half Size, 11 x 9 x 4"	5 qt	1 ea / 4 ea
123510	Third Size, 11 x 5⅝ x 4"	3 qt	1 ea / 6 ea	
123512	Quarter Size, 5¼ x 9 x 4"	2 qt	1 ea / 6 ea	
123514	Sixth Size, 5¼ x 5⅝ x 4"	1¼ qt	1 ea / 6 ea	
<b>TRI-PLY SERVEWARE TEMPLATES</b>				
	CW1102_	Full Size Template Fits (1) 123504 or 123503	-	1 ea / 2 ea
	CW1104_	Full Size Template Fits (2) 123508 or 123507	-	1 ea / 4 ea
	CW1106_	Full Size Template Fits (2) 123506 or 123505	-	1 ea / 4 ea
	CW1108_	Full Size Template Fits (3) 123509 or 123510	-	1 ea / 6 ea
	CW1110_	Full Size Template Fits (4) 123511 or 123512	-	1 ea / 6 ea
	CW1112_	Full Size Template Fits (6) 123513 or 123514	-	1 ea / 6 ea
P.4	CW7000	1 Qt Mini Casserole w/ 2 Handles	6¼" dia x 2½"	1 ea / 10 ea
	CW7000L	Lid for CW7000	6¼" dia	1 ea / 20 ea
	CW7012	3 Qt Wok w/ Handles	9½" dia x 3"	1 ea / 6 ea
	CW7014	5 Qt Wok w/ Helper Handles	11¼" dia x 3¼"	1 ea / 6 ea
	CW7014L	Lid for CW7014	12½" dia	1 ea / 10 ea
P.5	CW7016	Round Fry Pan, 8" dia	1¼ qt	1 ea / 8 ea
	CW7020	Grill Pan w/ Helper Handles, 11" dia x 1¼"	3 qt	1 ea / 4 ea
	CW2030	Roast Pan w/ 2 Handles, 11½ x 9½ x 2½"	3½ qt	1 ea / 6 ea
	CW2044	Oval Pan w/ 2 Handles, 16¾ x 10⅞ x 2½"	5½ qt	1 ea / 4 ea
	CW2034L	French Oven Lid, Fits CW2034	17½" dia	1 ea / 4 ea
P.6	CW2030R	3½ Qt Roast Pan w/ 2 Handles	11½ x 9½ x 2½"	1 ea / 6 ea
	CW7002R	2 Qt Tri-Ply Sauce Pan	6¾" dia x 3⅞"	1 ea / 8 ea
	CW7010BK	3 Qt Tri-Ply Brazier Pan	13⅞ x 10 x 2½"	1 ea / 6 ea
P.7	<b>TRI-PLY MINI SERVEWARE</b>			
	CW2050	Sauce pan w/ handle, 2¾" dia (Not Induction Ready)	5 oz	1 ea / 20 ea
	CW2052	Casserole, 5⅞" dia x 2¼"	16 oz	1 ea / 12 ea
	CW2052L	Lid for CW2052, 5⅞" dia		1 ea / 20 ea
	CW2054	Casserole, 6" dia x 1½"	16 oz	1 ea / 12 ea
	CW2040	Oval Casserole, 9 x 7 x 2"	53 oz	1 ea / 8 ea
	CW2070	Round, 4¼" dia x 2¼" (Not Induction Ready)	11 oz	1 ea / 6 ea

Item #	Description	Dimensions/ Capacity	Min Order/ Case Pack	
P.10	<b>ANGLED RISERS</b>			
CW900H	Full Horizontal Angled Riser	13 x 21 x 2"	1 ea / 4 ea	
CWARDG01_	Full Vertical Angled Riser	13¼ x 21¼ x 2¼"	1 ea / 1 ea	
<b>VERSA-TILE CARVING STATION TEMPLATES™</b>				
CW6432N	Perforated Single	21½ x 13½ x 1½"	1 ea	
CW6430N	Solid Single	21½ x 13½ x 1½"	1 ea	
CW6432BK	Perforated Single	21½ x 13½ x 1½"	1 ea	
P.11	<b>HOT WELL COVERS</b>			
CW6420	Full Size Hot Well Cover, Contemporary	13½ x 21½"	1 ea / 1 ea	
CW6420WV	Full Size Hot Well Cover, Wave	13½ x 21½"	1 ea / 1 ea	
<b>OUTDOOR COLLAPSIBLE FUEL SERVERS</b>				
CW600_	1-Well	12½ x 20½ x 10"	1 ea / 1 ea	
CW604_	4-Wells	51½ x 20½ x 10	1 ea / 1 ea	
P.12	<b>CHAFERS</b>			
CW40175	7qt Full Size Server with Stand	22¾ x 18 x 13"	1 ea / 1 ea	
CW40178	11qt Soup Server with Stand	16¼ x 19½ x 18"	1 ea / 1 ea	
CW40167	7qt Full Size Server	25 x 17 x 17"	1 ea / 1 ea	
CW40168	6qt Round Server	13½" dia x 17¼"	1 ea / 1 ea	
CW40297	Round Divided Food Pan [2] 2qt	15 x 15 x 2½"	1 ea / 1 ea	
CW40298	Full Size Food Pan 2½" Deep	20¾ x 12¾ x 2½"	1 ea / 1 ea	
P.13	CW40182	11 qt Soup Server [Induction]	16¼ x 19¼ x 13"	1 ea / 1 ea
	CW40165	4qt Round Server [Induction]	17¼ x 19¼ x 7¾"	1 ea / 1 ea
	CW40161	7qt Full Size Server [Induction]	22¾ x 17¼ x 8¼"	1 ea / 1 ea
P.14	<b>ACTION STATION KITS, COOKTOPS &amp; ACCESSORIES</b>			
	CW40201BRA	Includes Single Induction Countertop Station (CW40198) and Drop-In Electric Induction Cooktop (CW40196)–Brushed	25 x 22 x 5"	1 ea / 1 ea
	CWACTION1RSA_	Aluminum Single Induction Action Station Kit–Random Swirl	31¾ x 25¼ x 5¾"	1 ea / 1 ea
<b>ACTION STATION KITS, COOKTOPS &amp; ACCESSORIES</b>				
P.15	CWACTION2TBK_	Aluminum Double Induction Action Station Kit–Translucent Black	47¾ x 25¼ x 5¾"	1 ea / 1 ea
	CW60103	Half Long Size Cooling Plate	21 x 6¾ x 1½"	1 ea / 8 ea
	CW40196	12½" dia hob, 1800 Watts Induction Drop-In, 120 volts, 15 amps	—	1 ea / 2 ea
	CW1665_	1 Qt Condiment Crock	4¾" dia x 5"	1 ea / 1 ea
	CW4024_	1 Qt Contemporary Collection™ Straight-Sided Bowl	5 x 5 x 3"	1 ea / 1 ea
	CW4012_	1½ Qt Contemporary Collection™ Straight-Sided Bowl	4¾ x 4¾ x 6"	1 ea / 1 ea
P.16	CWACTION5_	Aluminum Double Butane Action w/ 2ea CW60101	14¼ x 55"	1 ea / 1 ea
	CWACTION6_	Aluminum Single Butane Action Station w/ 1ea CW60101	14¼ x 26"	1 ea / 1 ea
P.17	CW40210_	Aluminum Full Size Cooling Station w/ 1ea CW60100	14¾ x 25½"	1 ea / 1 ea
	CW40212_	Aluminum Half Long Cooling Station	8¾ x 25¼"	1 ea / 1 ea
	CW40214_	Aluminum Half Size Cooling Station w/ 1ea CW60100	14¼ x 12¼"	1 ea / 1 ea
	CWACTION7_	Aluminum Induction Station w/ 1ea CW40196	14¾ x 25¼"	1 ea / 1 ea

Item #	Description	Dimensions/ Capacity	Min Order/ Case Pack	
P.18	<b>DURACOAT (COATINGS)</b>			
	CW1066BK	3" Regular	13 $\frac{3}{8}$ " x 21 $\frac{1}{4}$ " x 3"	1 ea
	CW4088CP	1 $\frac{1}{2}$ Qt Small Slanted Round Bowl	8" dia x 4"	1 ea
	CW4052BK	3 Qt Half Rectangular Food Pan	12 $\frac{7}{8}$ " x 10 $\frac{1}{2}$ " x 2 $\frac{1}{2}$ "	1 ea
	CW4080LG	9 Qt Extra Large Rectangular Platter	31 $\frac{1}{2}$ " x 14" x 5 $\frac{5}{8}$ "	1 ea
P.19	<b>SIMPLE SOLUTIONS™ BUFFET SOLUTION AND BOWLS</b>			
	CW5018_	2 $\frac{1}{2}$ Qt Sixth Size	6 $\frac{3}{8}$ " x 6 $\frac{3}{8}$ " x 5"	1 ea
	CW5000_	10 Qt Full Size	12 $\frac{3}{4}$ " x 19" x 3"	1 ea
	CW5008_	5 Qt Half Long	6 $\frac{3}{8}$ " x 19" x 3"	1 ea
P.20	<b>SIMPLE SOLUTIONS™ DROP-IN TEMPLATES</b>			
	CW1066_	3" Regular	13 $\frac{3}{8}$ " x 21 $\frac{1}{4}$ " x 3"	1 ea
P.21	<b>COLD FOOD COVERS AND NSF®-7 TEMPLATE</b>			
	CW970_	Aluminum Solid, Full Size Template	13 $\frac{1}{2}$ " x 21"	1ea / 6 ea
	CWTTDG01_	Aluminum Full Size Grid Tile	21 $\frac{1}{8}$ " x 13 $\frac{1}{2}$ "	1 ea
P.22	<b>CW4035_ 3<math>\frac{3}{4}</math> Qt Rectangular Bowl</b>			
	CW4020_	2 $\frac{1}{2}$ Qt Rectangular Bowl	14 $\frac{1}{4}$ " x 4 $\frac{3}{4}$ " x 3"	1 ea
	CW4012_	1 $\frac{1}{2}$ Qt Square Bowl	4 $\frac{3}{4}$ " x 4 $\frac{3}{4}$ " x 6"	1 ea
	CW4014_	1 $\frac{3}{4}$ Qt Square Bowl	10" x 10" x 1 $\frac{1}{2}$ "	1 ea
	CW4016_	2 $\frac{1}{4}$ Qt Rectangular Bowl	19 $\frac{1}{2}$ " x 6 $\frac{3}{4}$ " x 1 $\frac{1}{2}$ "	1 ea
	<b>COUNTRY KITCHEN COLLECTION™</b>			
	CW1620_	1 Qt Medium	6 $\frac{1}{2}$ " x 6 $\frac{1}{2}$ " x 3"	1 ea
	CW1494_	24 Qt Extra Large	18" x 18" x 5 $\frac{1}{2}$ "	1 ea
P.23	<b>AURORA COLLECTION™</b>			
	CW4058_	1 Qt Sixth, Rectangular Food Pan	7" x 6 $\frac{3}{8}$ " x 4"	1 ea
	CW4052BK	3 Qt Half Rectangular Food Pan	12 $\frac{7}{8}$ " x 10 $\frac{1}{2}$ " x 2 $\frac{1}{2}$ "	1 ea
	<b>SIERRA COLLECTION™</b>			
	CW4088CP	1 $\frac{1}{2}$ Qt Small Slanted Round Bowl	8" dia x 4"	1 ea
	CW4048_	4 Qt Full Shallow, Rectangular Food Pan	21" x 12 $\frac{7}{8}$ " x 1 $\frac{1}{2}$ "	1 ea
	CW4080LG	9 Qt Extra Large Rectangular Platter	31 $\frac{1}{2}$ " x 14" x 5 $\frac{5}{8}$ "	1 ea
	<b>SERVING BOWLS</b>			
	CW3160_	5 $\frac{1}{2}$ Qt Round Serving Bowl	16" dia x 2 $\frac{1}{4}$ "	1 ea
	CW3120_	10 Qt Wide Rim Round Serving Bowl	18 $\frac{3}{4}$ " dia x 6"	1 ea
P.24	<b>COOLING PLATES, TRAYS AND DISPLAYS</b>			
	CW40309B	Display Set, Stand w/ Half Size Cooling Plates	22 $\frac{1}{2}$ " x 21 $\frac{1}{4}$ " x 20 $\frac{3}{4}$ "	1 ea
	CW40309C	Display Set, Stand w/ Half Long Cooling Plates	24 $\frac{3}{4}$ " x 17" x 19 $\frac{3}{4}$ "	1 ea
	CW60101	Half Size Cooling Plate	12 $\frac{3}{4}$ " x 10 $\frac{1}{2}$ " x 1 $\frac{1}{2}$ "	1 ea/6 ea
	CW2112_	Half Size Cooling Plate Tray	12 $\frac{7}{8}$ " x 10 $\frac{1}{2}$ " x $\frac{3}{8}$ "	1 ea/12 ea
	<b>NON-STICK GRILL PANS WITH GRILL MARKS</b>			
	CW1240NS	Non-Stick Full Grill Pan	20 $\frac{3}{4}$ " x 12 $\frac{7}{8}$ " x 1 $\frac{1}{2}$ "	1 ea/5 ea
	CW1240_	Non-Stick Full Grill Pan	21" x 12 $\frac{7}{8}$ " x 1 $\frac{1}{2}$ "	1 ea/5 ea



BRING PLATE TOWARDS FOOD WHEN SERVING



**WORLD HEADQUARTERS**  
801 Lakeside Drive  
Gurnee, Illinois 60031  
847.855.9000  
847.855.9012 fax

**PROFESSIONAL BAKEWARE  
BY TABLECRAFT**  
11739 N US Highway 75  
Willis, TX 77378  
847.856-5516

**CUSTOMER SERVICE**  
800.323.8321  
info@tablecraft.com  
www.tablecraft.com

10056



© 2020 TPC, Inc.  
PROBAKE BUFFET BOOK\_NP