

BUFFET & CATERING

Crates, Displays & Risers



CRATES, DISPLAYS & RISERS



GRAB & GO TWO-TIERED FRAME

Display and merchandise your baked goods, fruits, or grab & go prepacked foods with these new frames that fit our full- size and half-size crates perfectly.

- Black Powder Coated Steel
- See our collection of crates that pair with these frames
- Ships flat; lock & channel design for quick, easy assembly



Works with our Half and Full Size Gastronorm Crates. Shown here with CRATE11 (top) and CRATE114 (bottom), see our catalog, for our full assortment.



TWO-TIERED CRATE FRAME RISER

- Perfect for breakfast buffets, grab-and-go stations or merchandising
- Removable chalkboard panel to customize presentation
- Features adjustable shelves so you can display flat or on an angle
- Ships flat. Lock & channel design for quick, easy assembly

Each tier of this riser display is designed to fit: (1 ea) Full, (2 ea) Half, (3 ea) Third or (4 ea) Fourth Size Wood Crates



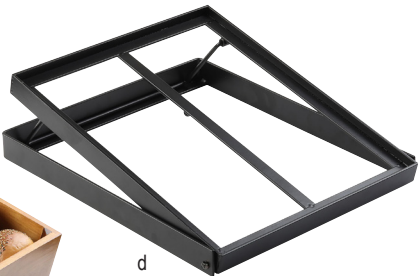
Chalkboard sign can be removed to save space

11000 Two-Tiered Riser Frame with: (2 ea) CRATE12 Half Size Crate (2 ea) CRATE124 Half Size Crate

TIERED CRATE FRAMES

Display and merchandise your baked goods, fruits, or grab & go prepacked foods with these new frames that fit our full- size and half-size crates perfectly.

- Black Powder Coated Steel
- Collapsible design for display or storage
- See our collection of crates that pair with these frames



Works with our Half and Full Size Gastronorm Crates. Shown here with CRATE114.

Item #	Description	Min Order
GRAB & GO TWO-TIERED FRAME-POWDER COATED (OVER STEEL, BLACK)		
a. 11622	15¼ x 15¼ x 13" Fits Gastronorm Half Size Wood Crates	1 ea
b. 11623	23½ x 17¼ x 13" Fits Gastronorm Full Size Wood Crates	1 ea
BLACK POWDER COATED STEEL		
c. 11000	21½ x 13½ x 22¼	1 ea
TIERED FRAME-BLACK COATED METAL		
d. 11447	Frame to Fit Half Size Crate, 11½ x 13½ x 4½"	1 ea
e. 11448	Frame to Fit Full Size Crate, 22 x 13½ x 4½"	1 ea

INDUSTRIAL COLLECTION™ TWO-TIERED DISPLAY STANDS

Display and merchandise your baked goods, fruits, or grab & go prepacked foods with elegant style. Mixed materials offer a neutral yet modern presentation. Fits in well with our existing Industrial Collection™ as well as our range of Acacia Crates, Paddles and more!

- Available in two styles: round and rectangular
- Black Powder Coated Steel, Acacia Wood
- Collapsible design
- Light assembly required; assembly instructions included
- Do not submerge in water, wipe with a damp cloth and dry immediately



Beautiful Acacia wood grain and black coated steel give these stands their rustic modern appeal—each piece will display unique variations in knots, grain and texture.

Item #	Description	Min Order
TWO-TIERED DISPLAY STAND, ACACIA & BLACK POWDER COATED METAL		
a. 10718	Rectangular, 17½ x 7¼ x 18"	1 ea
b. 10719	Round, 11¼ x 11¼ x 15"	1 ea
DISPOSABLE CONE HOLDERS		
c. 10030	Black Powder Coated Steel & Acacia, Holds 6 Cones / K-Cups, 7¼ x 7¼ x 9¼"	1 ea
d. 10031	Black Powder Coated Steel & Acacia, Holds 12 Cones / K-Cups, 9¼ x 9¼ x 13¼"	1 ea

stand & deliver

INDUSTRIAL COLLECTION™ DISPOSABLE CONE HOLDERS

- Display your disposable cones in style with our selection of tiered cone holders
- 10030 & 10031 feature rotating tiers for easy prepping and serving
- All styles include handles for easy transportation to and from the serving line



1¾" Ring diameter on all cone holders
Shown here with BAMDCN6 details on page 102



Great for ice cream cones, trail mix and even k-cups.



The Art of Craft;
Metal bands, rivets, and wood make these stands a perfect add-on to the Industrial Collection™

CRATE RISERS

Our crate risers bring height and attraction to your displays. Each crate style features one chalkboard panel for custom labeling and decorating. Crates nest together for storage when not in use.



Item #	Description	Min Order
ACACIA, NATURAL & DISTRESSED FIRWOOD		
a. HFCSET3	Farmhouse™ Acacia Set, Small 15 x 10 x 7½", Medium 17 x 11¼ x 9¼", Large 19¼ x 13½ x 10½"	1 set
b. RCBCRATE1	Natural Wood Set, Small 15 x 10 x 7½", Medium 17 x 11¼ x 9¼", Large 19¼ x 13½ x 10½"	1 set
c. RCBCRATE2	Distressed Wood Set, Small 12½ x 8¼ x 6", Medium 14½ x 9½ x 6¾", Large 16½ x 11¼ x 7½"	1 set

CASCADE RISERS™

- Versatile and attractive buffet solution
- Can be nested together or fanned apart
- Set of 3: Small (17¼ x 7½ x 4¼),
Medium (19½ x 7½ x 6½),
Large (22 x 7½ x 7½)



Item #	Description	Min Order
ACACIA, BAMBOO & BLACK PAINTED WOOD		
d. RACA300	Acacia	1 set
e. RBAM300	Bamboo	1 set
f. RBK300	Black	1 set

RECTANGULAR, SQUARE & ROUND RISERS

Our riser collections can play a supporting role in any buffet line, catering event, or tablescape with ease and versatility. Dual tone of materials offer a neutral but modern presentation.

- Available in two styles: square and rectangular
- Black Powder Coated Steel and Acacia Wood
- Set of three risers nest together for easy storage
- Hand wash only



NEW

Item #	Description	Min Order
RISERS – ACACIA & BLACK POWDER COATED STEEL		
g. 12261	Rectangular Risers 22 x 8 x 8", Combo: Acacia & Powder Coated Steel, Set of 3	1 set
h. 12262	Square Risers 10¼ x 10¼ x 8", Combo: Acacia & Powder Coated Steel, Set of 3	1 set
i. 12503	Round Risers 10 x 10 x 8", Combo: Acacia & Powder Coated Steel, Set of 3	1 set

BUFFET & CATERING

Displays & Risers



BARCLAY RISERS™

- Set of three risers nest together for easy storage



Item #	Description	Min Order
SQUARE-WOOD, BRUSHED STAINLESS STEEL OR BAMBOO		
a. WBK3	3-Pc Set, Black, Wood Set Includes: 5", 7" & 9"	1 set
b. WBAM3	3-Pc. Set, Bamboo Set Includes: 5", 7" & 9"	1 set
c. RS3	3-Pc Set, Brushed S/S Set Includes: 5", 7" & 9"	1 set
d. 12707	Barclay™ Square Riser Set Gold 9 x 9 x 9", Stainless Steel (14-1) Set of 3	1 set

NESTING RISERS

- Multi-purpose design—can be used as a base for a bowl or to elevate your dishes
- Set of three graduated-size risers nest together for easy storage



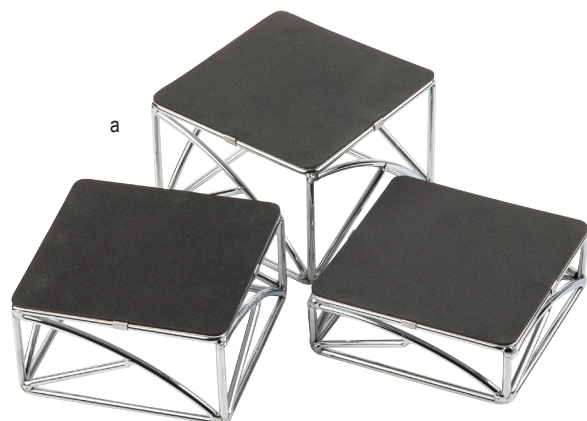
Item #	Description	Min Order
BRUSHED STAINLESS STEEL		
e. RR3	Set Includes: 8" dia x 9" h, 7" dia x 6" h, 6" dia x 3" h	1 set
f. 12706	Round Riser Set Gold 8 x 8 x 9", Stainless Steel (14-1) Set of 3	1 set



support systems

Our riser collections can play a supporting role in any buffet line catering event or tablescape with ease and versatility.

NON-SLIP RISERS



Flip and fill

CR3 Risers can hold 5 x 5" napkins

6 x 6" top plate

7 x 7" footprint



Item #	Description	Min Order
CHROME PLATED OR BLACK POWDER COATED		
a. CR3	3-Pc Set, Chrome Plated 6 x 6" Top Plate; 2", 3", & 4" Height	1 set
b. BKR4	4-Pc Set, Black 6 x 6" Footprint; 2", 3", 4", and 6" Height	1 set



Remington Collection™
Bowls featured on page 73



BUFFET & CATERING

Displays & Risers



BUTCHER BOARD BLOCK RISERS

- Metal frame features cut-outs for wood blocks to fit into easily while on the buffet line
- Sturdy butcher-block style risers, coated in food grade mineral oil, offer a natural yet modern look
- Lock & channel design for quick, easy assembly



Frame includes butcher block



Frame collapses for flat storage

Item #	Description	Min Order
BOARD & FRAME KIT– BIRCHWOOD & BLACK POWDER COATED STEEL		
a. BBR18126	Riser with Butcher Block Top (CBW1218175) 18½ x 12½ x 6½"	1 ea
b. BBR181212	Riser with Butcher Block Top (CBW1218175) 18½ x 12½ x 12¾"	1 ea
REPLACEMENT PARTS		
BBR181212F	Black Powder Coated Frame for BBR181212, 18½ x 12½ x 11¾"	1 ea
BBR18126F	Black Powder Coated Frame for BBR18126, 18½ x 12½ x 5½"	1 ea

MEDITERRANEAN COLLECTION™ TIERED BASKETS



Item #	Description	Min Order
BLACK POWDER COATED STEEL, TWO OR THREE-TIERED		
e. BKT2A	Two-Tiered, 9 & 10¾" Baskets, 12¼" H	1 ea
f. BKT3	Three-Tiered, 10, 12 & 14" Baskets, 33½" H	1 ea





Also available in 9" height

c



a (2-piece set)



b (2-piece set)

e (cover only)

g (plate only)

CAKE SETS, STANDS & COVERS

- Stainless Steel, melamine and wood stands and cake plates
- Polystyrene covers



d

Cover/Dome	Stands/Plates
421	Fits: 821, H820P, MGC13, & 10086
422/422A	Fits: 821, H820P, MGC13, & 10086
PCD1	Fits: 821, H820P, MGC13, & 10086
PCD2	Fits: 821, H820P, MGC13, & 10086
11519	Fits: 11489 & 11490
11443	Fits: 11441, 11442 & 11440

Item #	Description	Min Order
CAKE SETS		
a.	821422 Cake Stand / Cover Set, 12 $\frac{1}{8}$ " dia x 13 $\frac{1}{2}$ " h	1 ea
	*H821422 Cake Stand / Cover Set, 12 $\frac{1}{8}$ " dia x 13 $\frac{1}{2}$ " h	2 ea
b.	*H820P422 Cake Plate / Cover Set, 12 $\frac{1}{8}$ " dia x 13 $\frac{1}{2}$ " h	1 ea
STANDS, PLATES & COVERS		
c.	11441 Acacia Collection™ Round Cake Stand, 12 $\frac{1}{2}$ " dia x 6", Unassembled	1 ea
	11442 Acacia Collection™ Round Cake Stand, 12 $\frac{1}{2}$ " dia x 9", Unassembled	1 ea
d.	821 Assembled Stand, 12 $\frac{3}{4}$ " dia x 6 $\frac{3}{4}$ " h	1 ea
	821U Unassembled Stand, 12 $\frac{3}{4}$ " dia x 6 $\frac{3}{4}$ " h	1 ea
e.	422 Metal Handle Cover, 12" dia x 7 $\frac{1}{2}$ " h	6 ea
f.	422A Assembled Metal Handle Cover, 12" dia x 7 $\frac{1}{2}$ " h	6 ea
g.	H820P Low Profile Cake Plate, 13" dia x 1 $\frac{1}{4}$ " h	1 ea
h.	11440 Acacia Collection™ Round Cake Plate, 12 $\frac{1}{2}$ " dia x $\frac{5}{8}$ "	1 ea
i.	421 Plastic Handle Cover, 12" dia x 7 $\frac{1}{2}$ " h	6 ea
CAKE DOME, SAN PLASTIC		
j.	11443 Acacia Collection™ Cake Dome, 12" dia x 6"	1 ea
k.	PCD1 Cake Dome, 12" dia x 5 $\frac{3}{4}$ " h	1 ea
l.	PCD2 Cake Dome, 12 $\frac{1}{4}$ " dia x 4 $\frac{1}{2}$ " h	1 ea
m.	11519 Cake Dome, 11 $\frac{1}{8}$ " dia x 6 $\frac{1}{4}$ " h	1 ea
REPLACEMENT PARTS		
	422H Handles For 422 Cake Covers	1 ea

* Available as Cash & Carry



Cake covers 421 and 422 fit cakes with a maximum diameter of 10 $\frac{1}{2}$ " and height of 5 $\frac{3}{4}$ ".



Shown here with our Frostone Slate Tray, see page 68



Select cake domes fit channel on Frostone Slate tray (MGC13) on page 68 and Industrial Collection™ Rotating Cake Stand on page 76.



Fits our 11489 & 11490 Melamine Cake Stands (page 86)

MELAMINE STANDS & TRAYS

Complete your cake set with these new melamine Cake Stands in white or black. And serve appetizers, sandwich platters, desserts and more on our new durable and lightweight melamine black or white Serving Trays.

- Constructed of durable, lightweight melamine
- Easy to clean, dishwasher safe



Item #	Description	Min Order
CAKE STAND-MELAMINE		
a. 11489	Round, White, 11½" dia x 4"	1 ea
b. 11490	Round, Black, 11½" dia x 4"	1 ea
TRAY-MELAMINE		
c. 11491	Round, White, 15" dia x 2"	1 ea
d. 11492	Round, Black, 15" dia x 2"	1 ea



DOME DISPLAY FOR TRAYS

- Dome displays keep your food covered and fresh on the serving line
- Not microwave or oven safe



Item #	Description	Min Order
POLYCARBONATE		
e. PC2	Round Cover, 19 dia x 10"	1 ea
f. PC1	Rectangular Cover, 21½ x 13¼ x 7½"	1 ea
18/8 STAINLESS STEEL		
RPD21	21" dia Round Tray (Fits Cover PC2)	1 ea
g. RPD2415	Rectangular Tray (Fits Cover PC1), 23¼ x 15 x 1"	1 ea



Shown with RPD2415. Also fits full size crates, see page 79.



Easy rolltop cover with lip to keep it in place while serving and displaying. Fits full size wood crates listed on page 79.

NUMBER SIGNS

- Numbers printed on both sides



Item #	Description	Min Order
STAINLESS STEEL OR PLASTIC		
a. N150	4" Numbers 1-50, Stainless Steel	1 set
TN100	4" Numbers 1-100, Plastic	1 set

NUMBER TENTS

- Numbers on both sides
- TC125 and TC150 are also an oven safe solution for marking pizzas



Item #	Description	Min Order
STAINLESS STEEL		
b. TC125	Cut-Out Tents 1-25, 2½ x 1⅞"	1 set
TC150	Cut-Out Tents 1-50, 2½ x 2⅞"	1 set
c. T150	Numbers 1-50, 2½ x 1⅞"	1 set



everywhere a **sign**

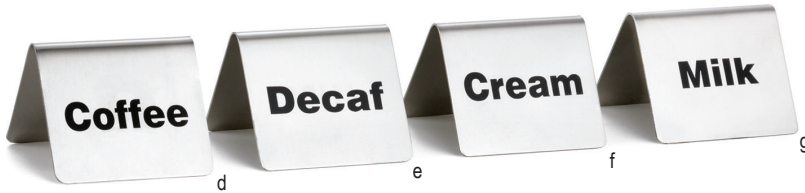
Make seating, serving and buffet identification simple with our wide variety of number signs, tents and card holders. We offer a variety to complement any style or décor.

BUFFET TENTS

- Easily identify items in your buffet with these buffet tents



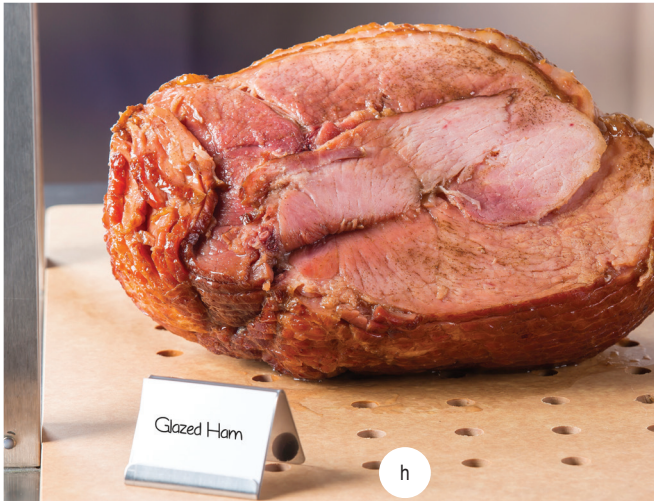
Item #	Description	Min Order
STAINLESS STEEL		
d. B1	Coffee, 2½ x 2"	1 ea
e. B2	Decaf, 2½ x 2"	1 ea
f. B6	Cream, 2½ x 2"	1 ea
g. B5	Milk, 2½ x 2"	1 ea
B7	Hot Water, 2½ x 2"	1 ea
h. B17	Card Holder, 2½ x 1¾"	1 ea



BUFFET TAGS



Item #	Description	Min Order
BUFFET TAGS		
i. CBTSS3	Stainless Steel Tag with Chalkboard, 3 x 1¾" (6 per pack) Chalk Not Included	1 pk



B17 design includes lip to hold customized cards (cards not included)



MAGNETIC CARD SIGN HOLDERS

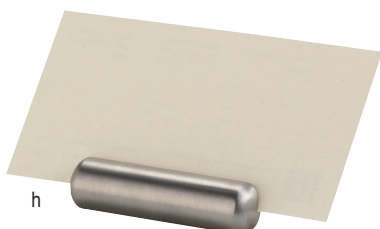


Ideal for displaying menus and policies with less patron contact

CURVED MENU HOLDERS



STAINLESS STEEL CARD HOLDERS



SQUARE CARD HOLDERS

A simple and elegant solution, this card / number holder is perfect for showcasing your name cards, table numbers, food items, and reserved signs.

- Hand wash only
- Dimensions: 2 x 2 x 1 3/8"
- Stainless Steel



Item #	Description	Min Order
SQUARE CARD HOLDER-HAMMERED STAINLESS STEEL		
a.	11575 Stainless Steel	1 ea
b.	11576 Stainless Steel with Gold PVD	1 ea
c.	11577 Stainless Steel with Black Powder Coating	1 ea
ACRYLIC		
d.	A362 Rectangular, 4 x 1 1/4 x 2 1/2"	1 ea
	ACHS46 Slanted Rectangular, 6 x 1 1/2 x 3 7/8"	1 ea
ACRYLIC		
e.	AS57 5 1/2 x 8 1/2 x 4" (Fits a 5 1/2 x 8 1/2 Sheet)	1 ea
f.	AS811 8 1/2 x 5 1/4 x 12 1/4" (Fits an 8 1/2 x 11 Sheet)	1 ea
g.	AS46 4 x 4 5/8 x 7" (Fits a 4 x 6" Sheet)	1 ea
STAINLESS STEEL		
h.	795 Bullet Card Holder, 2 1/8 x 1 1/2"	1 ea
i.	RCH21 Card Holder, 2 x 1 1/8 x 5/8"	1 ea



CARD & NUMBER HOLDERS



Item #	Description	Min Order
BLACK POWDER COATED METAL		
a. BK1908	8" Stand with Flat Bottom	1 ea
BK1912	12" Stand with Flat Bottom	1 ea
BK1915	15" Stand with Flat Bottom	1 ea
BK1918	18" Stand with Flat Bottom	1 ea
BKC2202	2" Stand with Clip	1 ea
BKC2206	6" Stand with Clip	1 ea
b. BKC2208	8" Stand with Clip	1 ea
BKC2212	12" Stand with Clip	1 ea
CHROME PLATED METAL, FLAT BOTTOM		
c. 1908	8" Chrome Plated	1 ea
1912	12" Chrome Plated	1 ea
1918	18" Chrome Plated	1 ea
STAINLESS STEEL, PLASTIC, NICKEL PLATED, OR BAMBOO		
d. CH2	3½" Circle Clip, Stainless Steel	1 ea
e. CHX4	4½" Double-Sided Clip, Steel	1 ea
f. BFCH4	4" Fork Card Holder, Stainless Steel	12 ea
g. 5CHBAM	5" Square, Bamboo, Metal Clip	12 ea
h. 1306	6" Card Holder, Stainless Steel Deluxe	1 ea
i. 596	2" Card Holder, Heavy Nickel Plated	24 ea

BUFFET & CATERING

Displays & Risers



Ships from Gurnee, IL 60031

World Headquarters: 801 Lakeside Drive, Gurnee, Illinois 60031 | p: 847.855.9000 | f: 847.855.9012 | Customer service: 800.323.8321
info@tablecraft.com | www.tablecraft.com | facebook.com/tablecraft